

Area: Papakura
 Address: 8 Youngs Road

Sheet No: 44

Common Name: Magnolia, Totara

Botanical Name: *Magnolia grandiflora*, *Podocarpus totara*

Condition Evaluation

Points		3	9	15	21	27	Score
Form		Poor	Moderate	Good	Very Good	Specimen	9
Occurrence		Predominant	Common	Infrequent	Rare	Very Rare	9
Vigour / Vitality		Poor	Some	Good	Very Good	Excellent	15
Function		Minor	Useful	Important	Significant	Major	15
Age (yrs)		10yrs +	20yrs +	40yrs +	80yrs+	100yrs +	21
SUB TOTAL							69

Amenity Evaluation

Points		3	9	15	21	27	Score
Stature (9)		3 to 8	9 to 14	15 to 20	21 to 26	27+	9
Visibility (km)		0.5	1	2	4	8	9
Proximity		Forest	Parkland	Group 10+	Group 3+	Solitary	21
Role		Minor	Moderate	Important	Significant	Major	15
Climate		Minor	Moderate	Important	Significant	Major	9
SUB TOTAL							63

Notable Evaluation

Points		3	9	15	21	27	Score
Stature	Feature						
	Form						
Historic	Age 100+						
	Association						3
	Commemoration						
	Remnant						
	Relict						
Scientific	Source						
	Rarity						
	Endangered						
SUB TOTAL							3
GRAND TOTAL							135

Notes:

Location: 8 Youngs Road, Papakura

Legal Description: "Lot 1 DP 314786 on CT 0/0/58367"

Tree Species: Magnolia & Totara

Currently scheduled: No

District Plan: Papakura District Plan

Heritage Values:

The section at 8 Youngs Road contains a Magnolia and Totara tree which have been assessed by an arborist as being over 100 years old. This road was initially known as Youngs Beach Road and is named after the Young family who were early settlers in this area. John Burnet Young was the first owner of this section of land and was one of the first five commissioners elected to the first Papakura Town District Council.ⁱ John Burnet Young's daughters Rose Young and Margaret Young inherited the property in 1913.ⁱⁱ The ages of both the Totara and Magnolia indicate that they were planted during the Young family's residence at 8 Youngs Road. A 1925 Town Plan shows Youngs Beach Road as relatively open and with large sections. However from the later 1920s onward this area was subject to multiple subdivisions and development.ⁱⁱⁱ

Records show that a new house was built on the site in the early 1920s.^{iv} Later records reveal the local significance of the trees at this site as several Town Plans mention the magnolia tree in the south western corner of the site, which was listed as protected due to its "aesthetic significance".^v In the 1990s the then owner of the property Mrs Ledwith requested permission to remove the magnolia tree. This tree was assessed by Stacy Colyer of Greenscape Arboricultural Limited in 1999. Colyer noted the tree was '15 metres plus (at 1.4 metres), 3 metres plus canopy spread and mature' and saw 'no reason to remove' the tree, in 1998. The Papakura District Council discussed the magnolia tree and it was concluded the council would "protect the specimen due to its notable significance in the area and the impact it has on the local environment". The council decided to maintain the area surrounding the tree as Mrs Ledwith was an elderly woman, who had owned the property since 1964 was unable to maintain it herself.^{vi} U. Meier, another arboricultural contractor assessed the Totara on site and concluded it was over 70 years old.^{vii} A later request to further subdivide this property in 2002 was denied based on the basis of these assessments.

The trees are of some heritage significance on the basis of their association with the John Young family, after whom the road was named – John Burnet Young being an early settler who contributed to local government.

Research completed by: Elinor Harris



Sources of Information:

Certificate of Title, 216/239, Land Information New Zealand.

Certificates of Title, 216/239; 360/34; 333/107; 215/137, Land Information New Zealand.

Craig Elsdon, *Breakwater Against the Tide: A History of Papakura City and Districts*, Papakura and Districts Historical Society, Papakura, 1982.

Observer, 17 August 1912, p.9

Papakura Town District, NZ Map 2679, 1925, Sir George Grey Special Collections, Auckland Libraries. Trees of Value noted on the Town Plan 1984, FD4, held at the Papakura Museum.

Papakura District Plan, Section Three, Part Three, 1997.

Papakura District Council Minutes, 21 November 1994, Trees FD4, Papakura Museum.

Papakura District Council Tree Policy 2007. Property Files, 8 Youngs Road, Lot 2, DP 814143, 3190/100, Papakura Local Board Service Centre

Papakura Road District - Valuation Assessment 1-362, 1914 – 1921, BAAR A137 506 / b 1/122, Archives New Zealand, Auckland.

Unproductive Sources Consulted:

Footprints (Auckland Libraries): <http://manukau.infospecs.co.nz/footprints/home.htm>

New Zealand Card Index website: <http://www.aucklandcity.govt.nz/dbtw-wpd/nzcardindex/>

Papakura Town District Valuation Assessments, 1905-1912; 1912-1918; Archives New Zealand, Auckland.

Survey Files, Papakura Town 1882-1904, BAAZ 1009 Box 1666d 1120, Archives New Zealand, Auckland.

Timeframes: <http://www.natlib.govt.nz/collections/digital-collections/timeframes>

ⁱ Craig Elsdon, *Breakwater Against the Tide: A History of Papakura City and Districts*, Papakura and Districts Historical Society, Papakura, 1982, p.141.

ⁱⁱ Certificate of Title, 216/239, Land Information New Zealand.

ⁱⁱⁱ Papakura Town District, NZ Map 2679, 1925, Sir George Grey Special Collections, Auckland Libraries; Certificates of Title, 216/239; 360/34; 333/107; 215/137, Land Information New Zealand; *Observer*, 17 August 1912, p.9

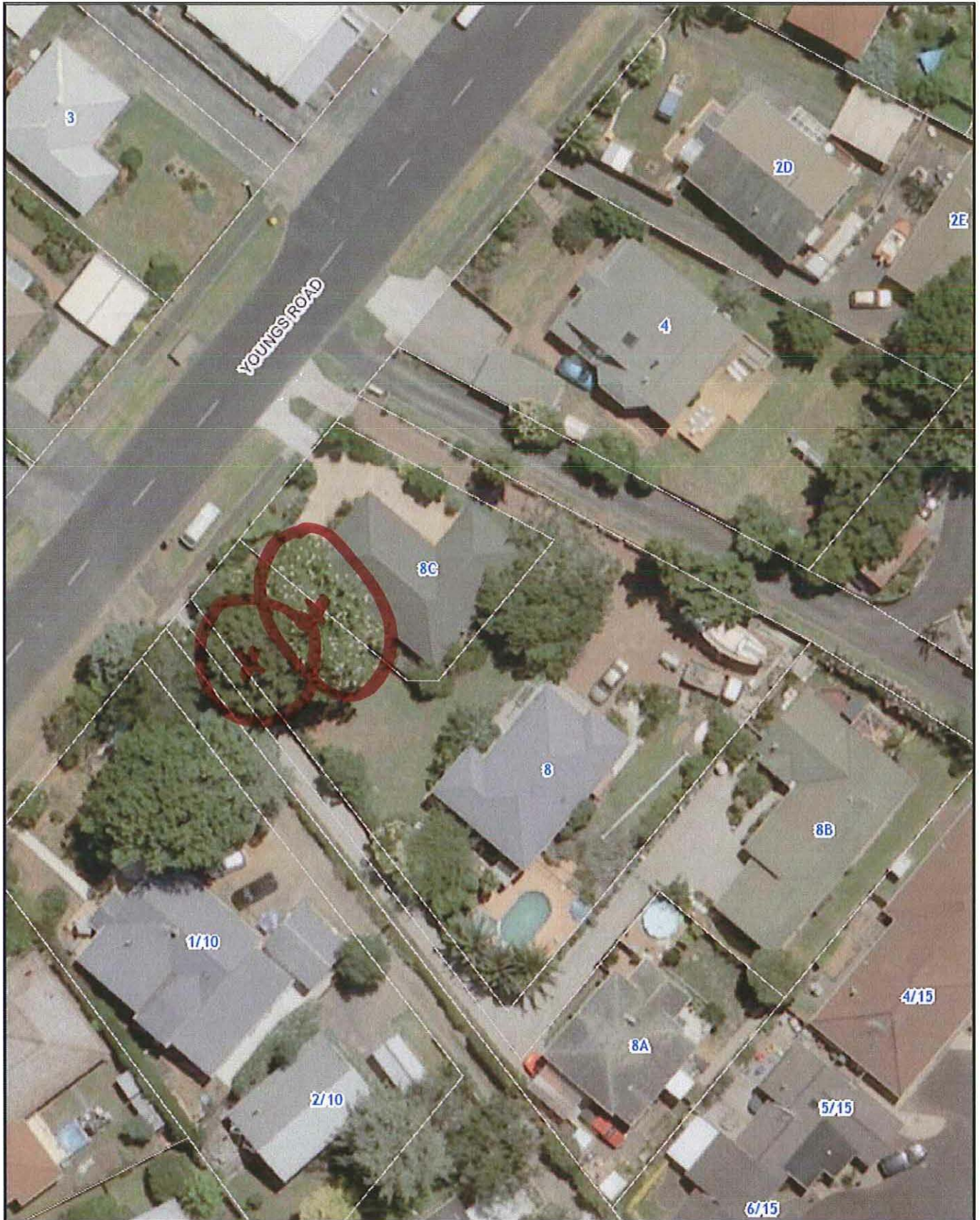
^{iv} Papakura Road District - Valuation Assessment 1-362, 1914 – 1921, BAAR A137 506 / b 1/122, Archives New Zealand, Auckland.

^v Trees of Value noted on the Town Plan 1984, FD4, held at the Papakura Museum; Papakura District Plan, Section Three, Part Three, 1997 also listed in the Papakura District Council Tree Policy 2007.

^{vi} Papakura District Council Minutes, 21 November 1994, Trees FD4, Papakura Museum.

^{vii} Property Files, 8 Youngs Road, Lot 2, DP 814143, 3190/100, Papakura Local Board Service Centre





This map/plan is illustrative only and all information should be independently verified on site before taking any action. Copyright Auckland Council. Boundary information from LINZ (Crown Copyright Reserved). Whilst due care has been taken, Auckland Council gives no warranty as to the accuracy and completeness of any information on this map/plan and accepts no liability for any error, omission or use of the information. Height datum: Auckland 1946.

Totara/Magnolia - 8 Youngs Rd

Δ4



Auckland Council
Te Kaurihera o Tāmaki Makaurau